



17 SLIEAU REE APARTMENTS MAIN ROAD UNION MILLE, IM4 4ND

£750 PER MONTH

Available immediately on an unfurnished basis, a 1 bed ground floor purpose built modern apartment with open plan living and off-road parking. Located in Union Mills, with local amenities as well as Douglas town centre within easy reach.



T: 01624 820600
E: hello@plumproperties.im
W: www.plumproperties.im

- Available Immediately • Unfurnished • 1 Bed
- Ground Floor Apartment • Off Road Parking
- Space • Open Plan Lounge/Kitchen • Kitchen
- Appliances Included • Double
- Bedroom • Modern Bathroom • Utility Storage
- Cupboard • Single Occupancy Only



Overview

Nestled on Main Road in the charming area of Union Mills, this delightful ground floor apartment offers a perfect blend of modern living and convenience. Built in 2003, the property is available immediately on an unfurnished basis, making it an ideal choice for those seeking a fresh start in a new home.

Upon entering the apartment, you are greeted by a welcoming hallway that features a practical utility cupboard, complete with a washing machine and a pressurised water cylinder. The heart of the home is the open plan reception room, which is bathed in natural light thanks to two sets of glazed sliding doors that invite the outside in. This space is perfect for both relaxation and entertaining.

The kitchen area is thoughtfully designed with modern shaker-style fitted wall and base units, complemented by a contrasting countertop. It comes equipped with essential appliances, including a free-standing fridge freezer and an electric oven and hob, making it a joy for any aspiring chef.

The accommodation is completed by a comfortable double bedroom, providing a peaceful retreat, and a well-appointed bathroom featuring a bath with a shower over, a pedestal wash basin, and a WC.

For added convenience, the property includes an

off-road parking space, ensuring that you have a secure place for your vehicle. The location is particularly advantageous, with a local convenience store and pub just a short stroll away. Additionally, the vibrant Douglas city centre is only a five-minute drive, offering a wealth of amenities and services.

This modern apartment is perfectly suited for tenants seeking sole occupancy and is ready to welcome its new residents. Don't miss the opportunity to make this lovely space your new home.

Additional Information

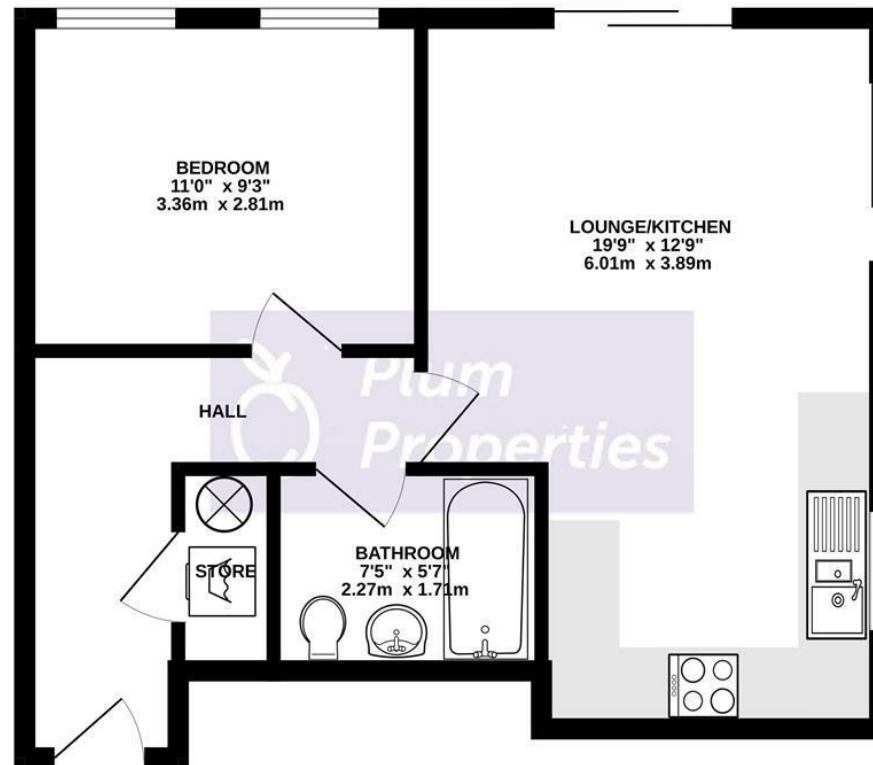
- Available Immediately
- Electric Storage Heaters
- Presurised Hot Water Cylinder
- Double Glazed
- Sole Occupancy Only
- Sorry, No Pets

Directions

From the Quarterbridge roundabout head in a westerly direction along Peel Road towards Union Mills. After a little over one mile take a right turning onto Close Gennal followed by the first left turning onto Maryland. Continue to the end of the road whereby the Slieau Ree development can be found.



GROUND FLOOR
456 sq.ft. (42.3 sq.m.) approx.



TOTAL FLOOR AREA : 456 sq.ft. (42.3 sq.m.) approx.

Whilst every attempt has been made to ensure the accuracy of the floorplan contained here, measurements of doors, windows, rooms and any other items are approximate and no responsibility is taken for any error, omission or mis-statement. This plan is for illustrative purposes only and should be used as such by any prospective purchaser. The services, systems and appliances shown have not been tested and no guarantee as to their operability or efficiency can be given.
Made with Metropix ©2025



Head Office Lettings
1 Athol Street
Douglas
Isle Of Man
IM1 1LD

T: 01624 820600
E: hello@plumproperties.im
W: www.plumproperties.im

Agents Note: Whilst every care has been taken to prepare these particulars, they are for guidance purposes only. All measurements are approximate and are for general guidance purposes only and whilst every care has been taken to ensure their accuracy, they should not be relied upon and potential buyers/tenants are advised to recheck the measurements